



# Union Scene

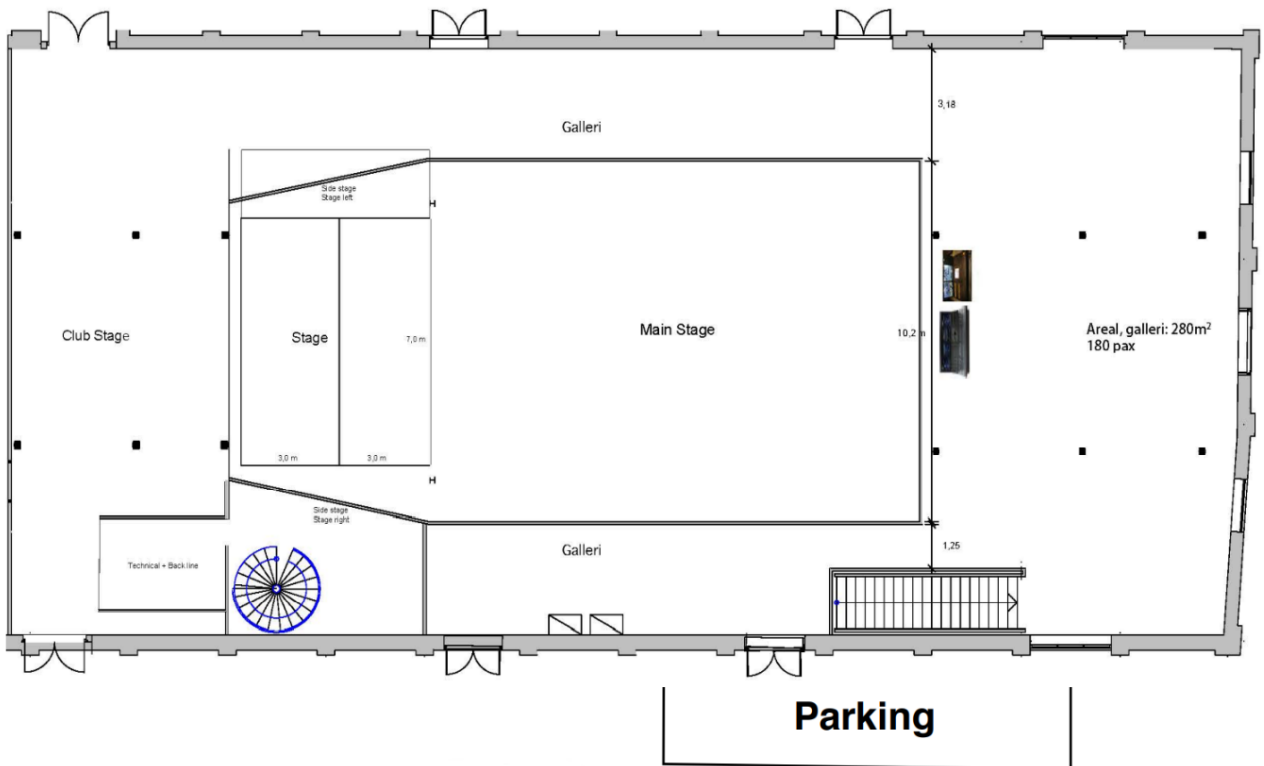
## General info Main Stage

- Parking:** By prior agreement: 15 meters parking spot located alongside the venue, in an alley called Fabrikkgata. Parking is only permitted on the left side of the street in marked up places. Permits will be issued by the venue representative. A 3 phase 32A (400V) is located on the wall next to the parking spot.
- Load in:** Load in is at street level next to the parking space with direct access to the stage. In the winter, the sidewalk is heated to keep snow clear.
- Entrance crew/artists:** Same as load in, with staircase access to dressing rooms.
- Wifi:** Network: UnionGjest  
Password: gjest2011
- Dressing rooms:** 5,5m x 9m catering and dressing room  
5m x 3,5m with shower & toilet  
These facilities are located directly above the stage.
- dB Limit:** To ensure a healthy concert experience for our audience, and to comply with EU noise regulations towards our employees, we are enforcing a 103dB (A) averaged over 15 minutes dB limit (Leq 15 = 103dB(A)) and a 99 dB (A) averaged over 30 minutes (Leq 30 dB(A)). Values will be measured at FOH. A properly calibrated measurement system Wave Capture RT-3 will be available to the sound engineer. Union Scene does not use a peak limiter or circuit breaker to enforce the rule.
- Fire and pyro:** Due to the over 100 year old building with wooden structure, NO use of open fire or pyro is allowed. Any questions about this are to be directed to Light engineer Tommy Arschim or Technical director Toro Heiskala.
- Smoking:** Union Scene is a smoke free building and according to national laws, smoking is prohibited in all public areas including the main stage and dressing rooms.
- Smoke/Haze:** Our venues are enviromentally certified. We encourage artists to minimize the use of theatrical smoke and haze. However, if smoke/fog or strobes is being used, we would like to receive a notification in advance, in order to inform the audience. If there are children on stage, we strongly recommend NO use of smoke/haze.

Updated: 13.11.2025

**Contact:** Petter Sæterøy - Technical Advance  
[petter@drammenscener.no](mailto:petter@drammenscener.no)

Pernille Hoff- Advancing  
[Pernille@drammenscener.no](mailto:Pernille@drammenscener.no)



# Union Scene

## Sound Equipment Main Stage

<b>FOH:</b>	1	X	Avid S6L 32D with E6L-144 Engine / DigiCo SD-11
<b>Stage Rack:</b>	1	X	Avid Stage 64 with 48 analog input, 24 analog output, 8 AES/EBU or ADAT Outputs. Shared Stage rack for monitor and FOH / DigiCo SD-rack 32/8
	6	X	Cat6 between stage and FOH
<b>Main Speaker System:</b>	12	X	d&b Vi8
	4	X	d&b Vi12
	8	X	d&b V-GSUB
Amplification:	2	X	d&b 40D
	1	X	d&b D90
<b>Front Fill:</b>	4	X	d&b Yi7P
Amplification:	1	X	d&b D30
<b>Delay:</b>	3	X	d&b Ti10L
Amplification:	1	X	d&b D30
<b>Monitors:</b>			
Wedges:	10	X	d&b M4
Amplification:	2	X	d&b D30 (8ch total)
<b>Microphones:</b>	1	X	Shure Beta 91a
	1	X	Shure Beta 91
	2	X	Shure Beta 52
	4	X	Shure SM 58
	4	X	Shure Beta 58
	1	X	Shure KSM 9
	8	X	Shure SM 57
	1	X	Shure Beta 57
	3	X	Shure Beta 98 AMP
	5	X	Sennheiser e604
	2	X	Sennheiser e906
	1	X	Sennheiser MD 421
	2	X	Neumann TLM 102
	4	X	Neumann KM 184
	3	X	Audio Technica ATM 350
	2	X	Audio Technica AT 4050 SM
	1	X	Audio Technica AE 2500
	4	X	DPA 2011

Updated: 13.11.2025

<b>DI's:</b>	4	X	Radial Pro 48 Active DI
	6	X	Radial ProDI Passive DI
	2	X	Radial ProD2 Passive Stereo DI
	2	X	Radial Pro AV2 Passive Stereo DI
	1	X	DI Radial USB PRO
	6	X	LA Audio Active DI

<b>Frequencies allowed for wireless microphones:</b>	510 – 518 MHz (K 26)
	614 – 622 MHz (K 39)
	670 – 686 MHz (K 46-47)
	738 – 753 MHz (K – SDL)

Secondary frequency range: 494-694 MHz and 733-758 MHz with maximum permitted radiated power of 50mW e.r.p.

The conditions for use of these secondary frequency bands are that the use does not disturb primary users of the band.

**DB Limit:** To ensure a healthy concert experience for our audience, and to comply with EU noise regulations towards our employees, we are enforcing a 103dB (A) averaged over 15 minutes dB limit (Leq 15 = 103dB(A)) and a 99 dB (A) averaged over 30 minutes (Leq 30 dB(A)). Union Scene does not use a peak limiter or circuit breaker to enforce the rule.

**Contact:** Petter Sæterøy - Technical Advance  
[petter@drammenscener.no](mailto:petter@drammenscener.no)

# Union Scene

## Sound Equipment (Extended)

Please contact us if you wish to use any of the following equipment, as it is not part of our standard deal, and/or needs to be transported or set up.

<b>Additional IO:</b>	1	X	Avid Stage 16 (16 inputs, 8 outputs and two AES/EBU outputs).
<b>Monitor Mix:</b>	1	X	Avid S6L 24D with E6L-144 Engine
<b>Additional Wedges:</b>	4	X	d&b M4
<b>Drum Fill:</b>	2	X	d&b Q-SUB
	1	X	d&b M4
<b>Amplification:</b>	1	X	d&b D12
<b>Wireless:</b>	8	X	Shure AD4 Q A 470-636 MHz (32 ch. total)
	1	X	Shure AD4 D A 470-636 MHz (2 ch. total)
	34	X	Shure AD1 G56 470-636 MHz Bodypacks
	8	X	Shure AD2 G56 470-636 MHz Handheld
	8	X	Shure Beta 58 Capsule for Wireless
	8	X	Shure SM58 Capsule for Wireless
	2	X	Shure KSM 9 Capsule for Wireless
	16	X	DPA 6066 Headset microphones
	24	X	DPA 4061 Lavalier microphones
<b>In-Ear System:</b>	8	X	Sennheiser EW 300 IEM G3 626-668 MHz (B)

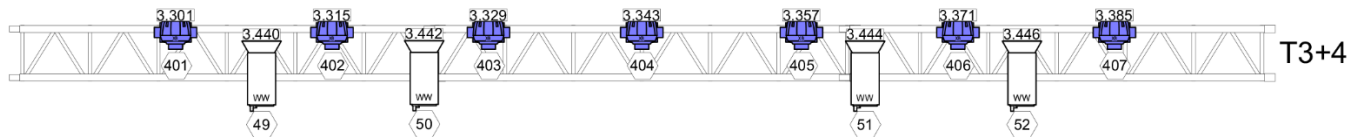
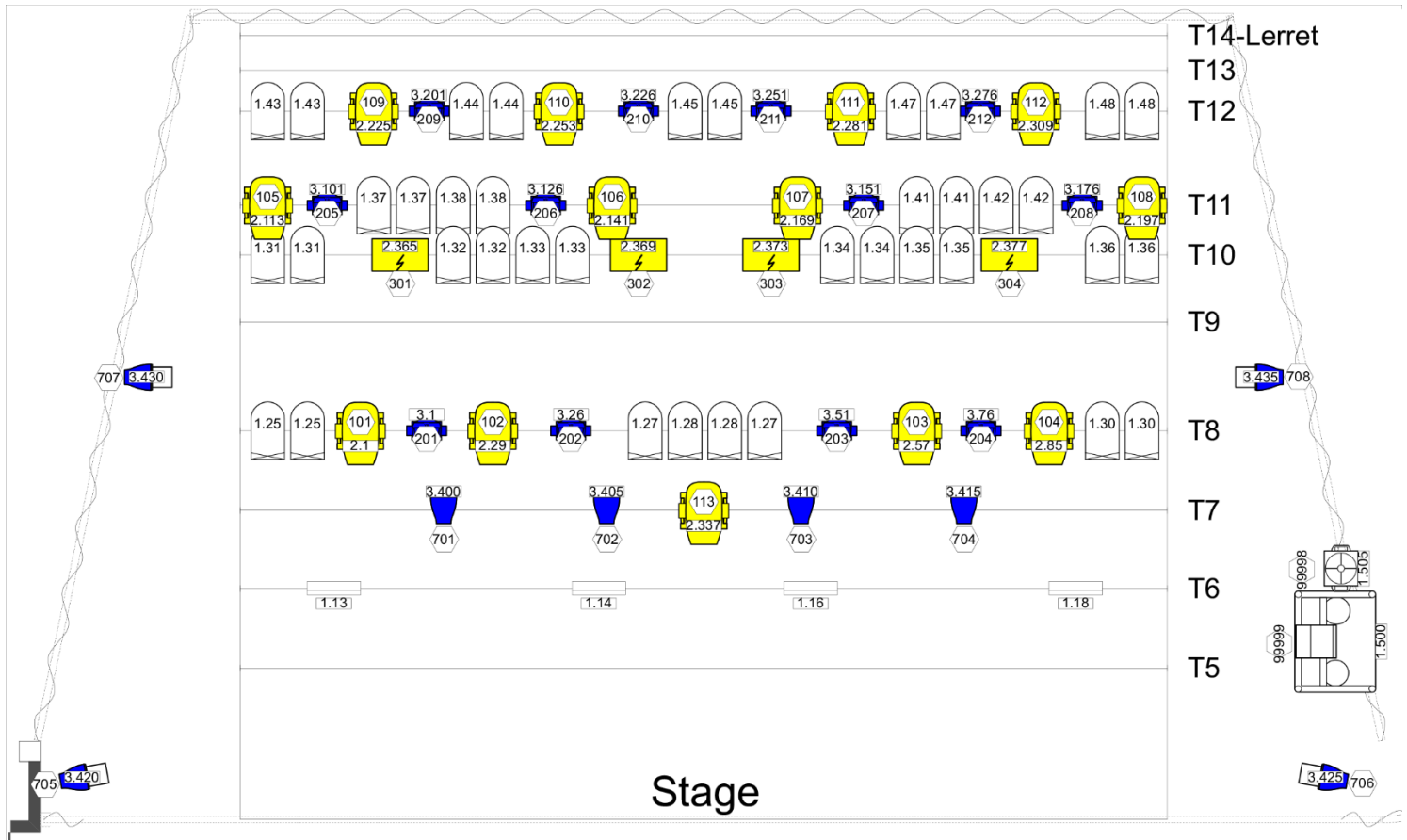
# Union Scene










## Lighting Equipment Main Stage

<b>Desk:</b>	1	X	GrandMA 3 Light
<b>DMX Universes:</b>	6	X	3 used for house rig, 3 empty universes on stage
<b>Dimmers:</b>	48	X	ETC Sensor + 3kW pr channel
<b>Automated Lights:</b>	13	X	Clay Paky Axcor Spot 400
	12	X	Martin Aura XB
	7	X	Marin Aura XB (front lights)
<b>Generic Front Lights:</b>	4	X	LDR .alba f250 LED 3.200K fresnels
<b>Generic Stage Lights:</b>	38	X	Par64 CP62 (paired two per channel)
	4	X	4lights (one channel per fixture)
	4	X	ETC ColorSource LEDPar (side lights)
	4	X	Martin Atomic 3000
	6	X	Floorcans CP62
<b>Atmospheric:</b>	1	X	MDG the One + MDG the Fan

**Smoke / Haze:** Our venues are enviromentally certified. We encourage artists to minimize the use of theatrical smoke and haze. However, if smoke/fog or strobes is being used, we would like to receive a notification in advance, in order to inform the audience. If there are children on stage, we strongly recommend NO use of smoke/haze.

**Contact:** Petter Sæterøy - Technical Advance  
[petter@drammenscener.no](mailto:petter@drammenscener.no)



-  Clay Paky Axcor Spot 400
-  Martin Mac Aura XB  
Extended - Extended
-  Martin Mac Aura XB  
Standard - Extended
-  Martin Atomic 3000 DMX  
4ch
-  ETC ColorSource PAR  
Medium Oval
-  LDR .alba f250 LED 3.200K
-  4light
-  PAR64 CP60
-  MDG The Fan
-  MDG The One Touring

  
**DRAMMEN**  
**SCENER**

<b>Union Scene</b>		
<b>Hovedscenen</b>		
LX Plot	Drawn By Thomas Evensen	Date 27/10/2023

# Union Scene

## AV Equipment Main Stage

<b>Projector:</b>	1	X	Epson EB- PU 2220 B- 3LCD Brightness: WUXGA 20.000 center lumens Resolution: 1920x1200 Aspect Ratio: 16:10
Lens:	1	X	Epson ELP LM15 – Medium throw zoom lens
<b>Screen:</b>	1	X	6x5 meters white electric screen
<b>Monitor Displays:</b>	2	X	55'' with moveable stands
	4	X	40'' wall mounted
	1	X	32'' Auto Que/Stage monitor
<b>Connections:</b>			HDMI at downstage Right or FOH Atlona 4K/UHD 8x4 HDBaseT/HDMI Matrix distribution system

# Union Scene

## Stage and rigging Main Stage

### **Stage:**

Depth: 6m

Width: 7m

Height: 0-1,2m

Height to ceiling: 4,5m at maximum stage height.

The stage is divided in 2 parts, each 3x7 meter with hydraulic lift system. This makes it easy to set the preferred height of the stage (front and back). For maximum stability the stage should be set on mechanical legs after ended rigging. The stage is only to be operated by authorized personnel.

### **Curtains:**

Backdrop and flat sides of black molton.

Manually operated front curtain of black molton.

All curtains are certified fire resistant. Any backdrops that are to be hung must be certified fire resistant. Please send this in advance or bring to venue manager at latest on arrival.

### **Hanging points:**

There are 12 pipe battens individually operated by a motorized fly system. 10 of these are above the stage and 2 are above the audience for front lights. Battens no 1 and 2 (audience) has a weight limit of 125 kg (PQ) and 100 kg pr point (PL). Battens no 3-12 (above stage) has a weight limit of 160 kg (PQ) and 100 kg pr point (PL).

### **Power:**

2x triple phase 63A 400V at upstage right

1x triple phase 63A 400V at balcony

12x single phase 16A 230V at balcony

5x single phase 16A 230V located around the stage for backline